

The MJC Design Times

Volume 1, Issue 1

December 2003

Sunset Magazine's 2003 Idea House Collection

Winning Window Treatments

Charlotte Gonser

Interior Environments

The draperies in the Warm and Colorful House "are an Ethan Allen creation. The fabric is a gabardine cotton blend. The colors are sunset tone. The top part of the panel is a goldenrod yellow, the middle part is an orange, and the bottom is crimson red . . . I really like the fact that the draperies matched the yellow walls, the red sofa, the yellow club chairs, and the red leather dining room chairs." ■



*Warm & Colorful
Living Room*

continued on page 2

INSIDE THIS ISSUE

- 1** Sunset 2003 Idea House Collection
- 1** ASID 2003 Designer Showcase Home - Atherton
- 5** Upcoming Events
- 6** Next Semester's Course Offerings
- 5** A Special Thanks...
- 9** About Our Program

The chair lists for \$1850.00, a small price to pay for beauty as divine as this!

ASID 2003 Designer Showcase Home - Atherton

Unusual and Interesting Chair Styles found in Million Dollar Mansions....

Nicole Harry

Period & Contemporary Furniture

My favorite chair is located in the dining room. I believe the style of this chair is English from the Middle Georgian Period. Judging by the condition of the chairs, I would guess they are antiques. The wood is a very dark cherry or mahogany finish. The seat is needle point in a floral pattern in ivory, blue, burgundy, and gold or yellow. ■

Audrey Gray

Period & Contemporary Furniture

The most stunning chair you ever laid eyes on was located in the foyer landing of the ASID Designer Showcase, on the top level of the Tudor-style estate. It is hand carved out of dark wood and features an organic, relief, leaf pattern. The age is not given although it is clearly antique since the red-orange velvet covering the back cushion has aged nicely. The seat cushion is covered with a polka dot silk in yellow ochre, which may or may not be original. The shape of the chair (the negative space does the chair justice) as a whole drew me in, since it demands your undivided attention. The chair lists for \$1850.00, a small price to pay for beauty as divine as this! ■

Stefanie Scheel

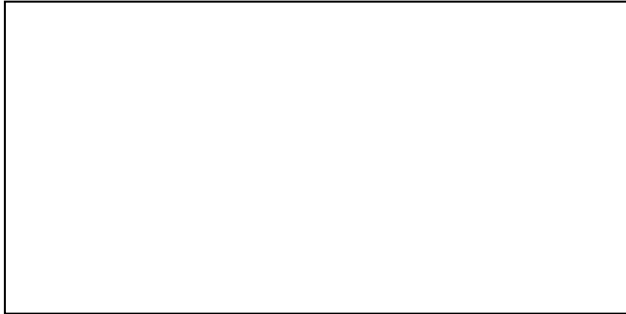
Period & Contemporary Furniture

This antique chair has orange Upholstered cushions, leather Material. The chair is very old And detailed. Located in the Grand Salon. ■

Sketch of Chair

Amanda Henry
Interior Environments

“The bay window in the upstairs nursery had a window seat designed by Ruth Wood and the Décor was by Bille et Plume, Françoise Kirkman. The materials were of a light lavender hue and the window treatments were shades that had writing on the bottom edges of each of them.” ■



Walls of Interest

Meredith Patterson
Interior Environments

“The geometric shapes as part of the staircase wall in the entry . . . were based on designs by Frank Lloyd Wright, Charles Mackintosh, Charles Sumner, and Henry Green. They gave the appearance of being randomly placed with no pattern in mind . . . The pattern was an extension of the wall itself and the shapes were painted a slightly lighter tint than the wall color, as if they ‘jumped out’ of the wall.” ■



Focus on the Focal Point

Not your average fireplace...

Charlotte Gonser
Interior Environments

The fireplace was the focal point of the room. It had a steel I-beam mantel and a densely patterned, terrazzo-like surround. The fireplace looks like its acrylic but it is not. The fireplace is made of concrete and is

Continued on Page 3

Spotlight on Professional Designers

Jennifer Mara
Period & Contemporary Furniture

Penny Chin is a highly creative designer who uses a great variety of colors and materials when working on projects. Although she uses so many different colors, materials, and choices of furniture, her general style remains the same. In each and every one of her photos on her web site, I noticed that the general feeling I get from looking at them does not change. She sticks to the modern contemporary look, and her main focus is on kitchens and bathrooms, two very important rooms in the design world. I learned from her web site that she is the president of the Peninsula Chapter of the ASID organization. She is also a California State Licensed contractor, and she attended Cañada College, in San Mateo, CA in the three year Architecture Program.■

Viewing An Environment With A Critical Eye....

Loni LeCaïn
Interior Environments

The large bathroom connected to the master bedroom is a beautiful well-designed room. The soft green colors on the cabinetry with white marble countertops give the bathroom a soft calming feel. The chaise lounge was placed in the center of the room under a large window in the ceiling, which had a sheer fabric that draped gently down to the floor overlaying the chair. This gave the room a feeling of pleasure and relaxation. Orange, brown and neutral accents were used in the vanity, tile and chair that added warmth to the room. The shower had mosaic tile, a large built in bench, and many showerheads for a spa like treatment. The bathtub was rather large and had a beautiful base. A window with blinds and pull down curtains was positioned over the tub and matched a smaller window in the shower area. White countertops placed on the sinks, vanity and bathtub brought in continuity to the room. The windows in the bathroom above the tub and in the shower, and the large window on the ceiling added a great amount of light. Recessed lighting is placed on the ceiling and sconces are placed on the mirrors to add extra light. While the sconces are beautiful, I'm not sure that they will be adequate light for makeup application.

Environment Created by: Julie Freeman-Gonzalez of "Design 101."■

Continued from Page 2

is embedded with recycled fragments of yellow traffic lights. The fireplace almost gives the illusion of being apple green, but when you get up close enough, you can see that it is not. It seems to have a life of its own; it takes on the colors of the room.■

Sudha Porecha

Interior Environments

The living room and dining room in warm and colorful idea house occupy opposite ends of one large space. It is a lesson in decorating with color, reflecting various hues of a sunset. The golden yellow walls are an effective backdrop for the bright red sofa, red dining room chairs and multi-color contemporary rug. The simple fireplace with a floating mantel features a limestone surround which is from Alpha Granite and Marble. In the dining room the wall was divided diagonally and applied rich color glazed on the lower section of the wall and leaving the upper part its original color. This shows how glazes can change the look and feel of a wall. Three contemporary pendant lights are hung above the glass top dining table. Red leather 'Brno' tubular chairs are from Design Within Reach. The room had plenty of windows to let ample natural light filter in. The furniture arrangement was placed in front of the fireplace which kept the fireplace as the focal point of the room.■

Here a Chair, There a Chair, Everywhere a Chair, Chair....

Our Contributors Review Their Favorites

Hillary Hyatt

Period & Contemporary Furniture

Contemporary Chair

A green rolling desk chair, silver frame with green cushion, slightly reclined back. This chair was from a home office in the first home, Warm and Colorful. This chair was placed at a desk, it's manufacture was Design Within Reach, and the product was called Eames Aluminum, Apple. The frame of the chair is aluminum and the color of the chair is an apple green.■



*Eames Aluminum
Management Chair:
DWR \$1750*

DWR Exclusive

*H 33-34" D 17-20"
Adjustable Arm rests
26-29"*

*Spinneyback full grain
leather in Apple Green.*

Continued on Page 4

What Windows Are Wearing

Regina Greener

Interior Environments

In the ASID showhouse there was a window treatment that I really liked. It was on a large window hung ceiling to floor. There are two layers – one was a sheer fabric and the second layer was a red velvet curtain with stenciled leaves. The designer, I think, decided to make these to be used for privacy and warmth.■

Nicole Harry

Interior Environments

The window treatment in the Grand Salon was contemporary and it looked like they were made of silk. They are in a checkered pattern in gold and olive green. The texture is smooth and does not have a lot of depth. The tiebacks are rope-like but soft. The treatments could block out some light. The windows did not face the hot sun of the west and this area does not get extremely hot. The treatment works for this room.■

Making A Grand Entrance...

Michele Beatty

Period & Contemporary Furniture

The staircases were each different in their look and materials, although the two Sunset houses were the same design. One is light and airy by its light wood and white simple spindles. The other uses the natural materials of dark wood and glass for its contemporary look. The ASID house had a very grand and sweeping staircase and makes you want to see what is at the top. I thought all three staircases were pretty narrow and had narrow treads.

Hillary Hyatt

Period & Contemporary Furniture

The railing on the staircase was ivory colored, the staircase itself was very narrow and steep. The staircase twisted towards the right upstairs and to the left downstairs. The entry way was very beautiful, there was a large floral arrangement as you walked in and if you looked up behind the door there was a broken gothic style arch with a Greek urn in it.■

Vanessa Camorlinga

Period & Contemporary Furniture

The architectural features of the entry and foyer are influenced by Roman design. The designs show the Roman architectural style in a carved high relief way. The door has high relief squares divided in four columns all over the wood door, and the door is surrounded by a Tudor arch. On the outside there

Continued on Page 5

Vanesa Camorlinga
Period & Contemporary Furniture

The contemporary chair that I liked the best was Lem Piston stool. It is found displayed as the Warm and Colorful Idea Home in the kitchen bar table. The manufacture is Design With in Reach, and its parts are the base, platform, seat, paddle, and glass cylinders. The chair's materials are a plywood seat with beech veneer, and a Zinc-plated metal base with a layer of stainless steel. The column is chromed steel, and the upholstery can be made in veneer and leather seat, but I think in this occasion the chair was made of veneer. It swivels and adjusts easily from counter height to a bar. ■

*Lem Piston Stool
- Leather Seat*

DWR \$675.00

*Shin & Tomoko
Azumi*

*H29-32.5" W14"
D16.5" Seat
Height 27-31.5"*

*Leather seat and
Chromed Steel
frame w/matte
finish.*



The red circle rug gave me a "rush," it was perfect.

Charlene Cross
Period & Contemporary Furniture

Contemporary Blair Chair,
Pumpkin Color
Linen or canvas type fabric,
Smooth texture
Semi-attached back
Loose, soft cushion
Welted
Ethan Allen ■

Michele Beatty
Period & Contemporary Furniture

This chair I love because of it's color. It makes it fun as well as comfortable and functional. ■

Attention! Not All Mansions Are Formal, Stuffy Places! We have Proof!

Putting the fun back into Family Rooms

Vanesa Camorlinga
Interior Environments

The interior environment of the sitting room by Barry Johnson has a light weight feel. There are only casual design elements for the family. A game table, a plasma television, and a sectional sofa are the main furniture for the family to use. There is nothing serious in this room. The pillow paint of tomato designs are repeated in the bathroom and pantry. The floor has a straw-like woven texture carpet to it, which is called Jute. The walls as well as the ceiling are treated with a teapot smooth textured paint, which makes the window stand out. Both window coverings are Conrad grass shades, which makes the design of the room even more informal. A coffee table is surrounded by the sectional beige sofa. The sofa is accompanied by the green and red tomato print mounted on the pillow faces. At the left corner is a pedestal table base with its own green crocodile leather table benches. ■

And the fun doesn't stop there!...

Charlotte Gonser
Interior Environments

The Tomato Bathroom. Wow! How do you describe the mural in that small bathroom? Its amazing! The colors are so bright and colorful. Tomatoes, green yellow, red, orange, and rich green vines on a very white wall. The concept of the metal was brought to life by Evolution Metal Products, who made the amazing dark copper pedestal sink. Kolkka provided a huge metal mirror with copper and brass leaves. The towel ring and the toilet paper holder also had that special copper leaf featured on it. The ceiling had recessed lighting and a hidden ceiling fan in white. The flooring was solid hardwood. There was white molding along the top of the wall. The floor also had an air vent. The sink had a silver faucet. The toilet was a white modern design. The red circle rug gave me a "rush," it was perfect. There was a black candle and a black soap dish on the toilet tank.

Continued on Page 5

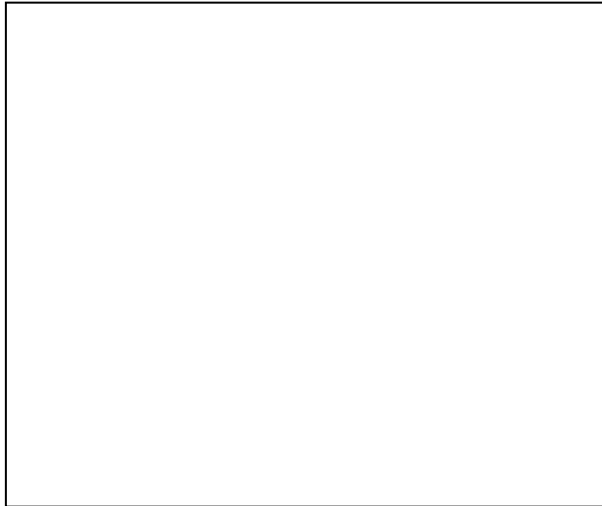
Space Planning in an Inviting Nursery

Anne Aiello

Period & Contemporary Furniture

Furniture Placement – Nursery, Sunset Warm and Colorful House, Los Gatos, CA

The nursery, located on the second floor of the *warm and colorful* home, was created by Bille et Plume, Francoise Kirkman Design. As you enter this inviting room, you are surrounded by light lavender walls, with orange and green accents of nature. On the wall opposite the door, a large hand-painted orange California poppy catches your eye. As the child grows, these milestones can be recorded along the long stem of the flower. The whimsical window seat is cushioned in an orange fabric that balances the large orange poppy on the adjacent wall. Above the seat hangs a canopy of pale green leaves, which ties in the peaceful nature theme in the room. Some of the accents are inspired from nature as well, such as the leaf shaped pillows. A few contemporary details include the small hourglass shaped table, next to the chair. The three black floor cushions for play add a bolder look. The oval shaped crib placed on an oval neutral rug helps create the soft lines in nature.■



Continued from Page 4

The best personal touch had to be the two rolls of crepe paper on the toilet paper holder, one was yellow and the other green. The attention to detail was amazing. Barry Johnson is a residential designer. He believes that a home tells a story about the people who live there, so it should reflect their dreams and events that shape their lives. Color is the starting point with Barry. Barry has been designing homes on the peninsula for over 20 years. He has many projects, which include homes in Pebble Beach, Kona, Miami, and other cities in Florida. The bottom line is, the bathroom was inspired by “Del Monte.” Who knows, maybe the owner’s ancestors were tomato farmers. I have never in my life been so impressed by a bath. The End.■

Wow Charlotte! Had a little trouble working up some enthusiasm, eh? –Ed.

EDITORIAL STAFF

Wendy Hoit

Loni LeCain

Sylvia McGee

Meredith Patterson

Brandt Stone

Stylish Outdoor Living

Stacy Switzer

Period & Contemporary Furniture

These Redwood Rockers were an eye catcher. They were handmade by the Vintage Redwood Company of well-aged Redwood trees. Redwood is known to be a very weatherproof wood and extremely durable. These chairs had a bulky, stable feeling to them that added to the relaxing outdoor atmosphere. They also had boat like rockers that made them look like they would have a fun rock to them.■

Mindy Wyman

P&C Furniture

This piece of furniture is a vintage California Redwood Rocking Chair. The material Used is recycled redwood.



The redwood rocker is hand rubbed with a soft matte finish to ensure durability for outdoor conditions. The redwood rocker also has a slant back and two wide armrests on each side of it. This chair was in the backyard of the warm and colorful house. ■

Charlene Cross

Period & Contemporary Furniture

Craftsman and Mission design styles combine to create a well-balanced rocker that is both attractive and surprisingly comfortable. In this case, form does follow function. In addition to its eye catching appeal, this rocking chair is just plain comfortable. The back agreeably curves into the contour of your body, and the chair's broad arms provide sturdy support. Redwood lasts for many years and has been sealed for durability.■

Imaginative Bathrooms

Zana Laidlaw

Interior Environments

The downstairs bathroom in the second house was absolutely amazing. The wrap-around shower had floor-to-ceiling mosaic tiles in an iridescent purple/blue color. The sink in this bathroom was most definitely my favorite aspect of the room. The sink was a blue and green glass bowl that matched the marble going up the wall behind the sink. The lighting was very simple but fit well in the room.■

Continued on Page 7

Continued from Page 3

are two Roman columns supporting a pediment, next to those columns are two more columns supporting an entablature. At the top of the door is another series of square designs placed in a row around the corner of the door wall and ceiling. The effect given by this design is impressive because it impacts guests right away by the detail of the design.■

Where Beauty Sleeps...

Bedrooms of distinction

Justina Scott

Period & Contemporary Furniture

The master bedroom was my favorite bedroom. The way the furniture was arranged and the lighting was incredible. The ceiling lights were awesome. There wasn't a whole lot of light, which created intimacy in the bedroom. Another thing that made the room more intimate was the fact that there wasn't but to the room, for example, there wasn't much furniture and it was spread out. The combination of the placement of the furniture and the lighting was what made the room seem intimate. The bed looked incredibly comfortable. The light coloring also made the room seem more inviting, they were all light and "fluffy colors". They were not intimidating or bold to give someone the feeling of being on the defensive. I liked the light color usage and the blending effects.■

Mercedes Virgen-Luquin

Interior Environments

The guest's retreat bedroom, on the second floor is labeled as room #25. It has a common, but interesting layout. This room has a contemporary organic field and style, with dark neutral colors displayed in it. Alison Whittaker, the designer, utilized McGuire and Baker furniture to achieve the clean, simple, and organic environment. The most noticeable feature that the design included was the illusion of space. The way the designer contrasted the color of the wall against the furniture created an illusion of space because the wall, ceiling and floors were in light colors. Her other skill with this design was the use of variation in scale because the table, bed, chair, and chest were all different heights, widths and sizes.■

Continued from page 6

Justina Scott

Interior Environments

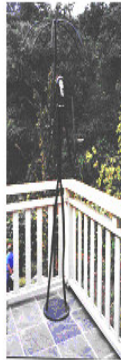
In the second sunset home, on the bottom floor near the back, there was a very unusual bathroom. What made this room so unusual was the sink. The sink and countertops were, in a way “rough”. The floor was like mini, nicely cut rocks. The counter, as well as the walls, was soft. The lighting was something I rather enjoyed the most. I liked the square box used as lampshade. The sink also was very unusual; the drainage looks different as though it is draining right into the walls. Overall, the bathroom had a relaxing feel to it. The size and soft toned colors made it comfortable.■

Art Outside

Audrey Gray

Period & Contemporary Furniture

The best part of walking through a fresh designer home is the unexpected surprises at every turn. I was delighted to walk out onto the balcony of the Sunset Idea Warm and Colorful Home and discover a wonderful 7 foot sculpture towering over me. The message by the artist is depicted so well in the work. The solemn stare of the man while holding his left hand out towards you combined with the tattered umbrella he holds at his right is striking, understated. It is cast out of steel and would withstand many years of outdoor life.■



An Eye for the Details

Sudha Porecha

Interior Environments

The hardware from the kitchen of the Warm and Colorful House is made by Kraft Maid Cabinetry in satin chrome finish. The grip is very easy. The style is contemporary and goes very well with the pewter and charcoal-stained cabinets, stainless steel range, metallic-look back splash and raven-black granite marble. The size of the cabinet is in perfect proportion to the cabinet. The same chrome-finish pulls are used on cabinets around the house. The contemporary plastic pull was used on the shower door.■

Continued on Page 8

Historical Reflections...

Mindy Wyman

Period & Contemporary Furniture

The grand salon had a carved Greek fireplace. Hanging above the fireplace there was a mirror, which had significance symbolism. The mirror originated during the era of King Arthur. The significance of the mirror represents the “Order of the Garter”. The Order of the Garter refers to a lady at court who dropped her garter and the King said as he picked it up, “Shame to him who thinks evil of it”, or “Honi soit qui mal y pense”.■

The View From The Top

Nicole Harry

Interior Environments

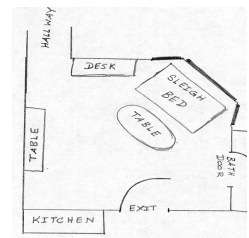
The overall interior environment is pleasant; the neutral colors made the house flow and didn't overpower you with color. The room is beautiful and I think the designers did an outstanding job. The layout of the home, I thought, was not great; I felt there should have been larger rooms to entertain. The views were amazing. It seemed that each window had a deliberate focal point. Many of the windows had a Japanese maple tree centered in the view. The patio and balcony's were great for bringing the garden into the bedrooms.■

Making The Most An Oddly Shaped Space

Stacy Switzer

Period & Contemporary Furniture

This designer made the Daring decision to put the sleigh bed in the cove of the bay window. In such a small space it could have taken up too much room, but she made it work. The kitchen cabinet with the built in sink was adorable and fit perfectly in the space provided. The decor conveyed a sophisticated cottage look and feel. It had a very relaxing and cozy feeling to it that any guest staying there would enjoy.■



Continued From Page 7

Regina Greener

Period & Contemporary Furniture

The architectural detail in the Cool and Contemporary home's entry is very interesting. On the wall against the stairs there are moldings going vertically and horizontally. The moldings are all different widths and lengths. They don't go straight across, but are staggered.■

Cynthia Romo

Period & Contemporary Furniture

I noticed a lot of glass in one area of the idea houses. It had glass on the stair rails which. The glass was also added to the kitchen cabinets. The doorway to the kitchen had a huge glass sliding barn door.■

A Case for a Case Piece

Charlene Cross

Period & Contemporary Furniture

Inspired by the shingled, Angled roof of a Sussex Cottage, this 4-door credenza (2000) exhibits dramatic form mixed with functional elements. Four louvered doors are beautifully integrated into the piece with dominant horizontal lines that mimic the credenza's rectangular shape. Each compartment has an adjustable shelf to accommodate large and small objects. Rich oak veneer is carefully chosen by hand for consistency, and is expertly applied to all sides, enabling the credenza to be used as a room divider. A steel base lends further material interest and acts as a stable foundation. Made in Spain.■



The Heart of the Home

Vanessa Camorlinga

Interior Environments

The Kitchen 'Provence d'Elegance' was designed by Penny Chin of Elements in Design. Her intention with the kitchen design was to bring the outside in, which she did amazingly well. It provides elegance in the overall design with a yellow color scheme throughout the kitchen and dining rooms. The counter top has a very smooth finish, but a visual texture made of Golden Fern Granite. The trim fixtures of the kitchen and dining room ceilings display a Greek influence. The outlets were placed on the island cabinets, hidden in fake drawers. The kitchen and dining room floor have a very interesting square design made of limestone surrounded by hardwood. The kitchen has several modern style Viking Professional Appliances and I noticed three different dishwashers placed on either side of the sink area. The kitchen wall was covered with honeycomb shaped white tile and I noticed a texture on one of the switches. The switch intersected with the edges of four tiles, and the designer painted division contour lines like the other honeycomb. The antique farm style chair repeats the pattern of the wood structure cabinets of the kitchen, and the color of wood cabinets continued all the way to the dining room, which brings these two rooms more together.■

Striking Floor Treatments

Cynthia Romo

Interior Environments

The floor that I liked best is from the Warm and Colorful house, it was in the guest area. The floor was maple, it gave the room a comfortable feel.■

Jessica Morgan

Interior Environments

The Endless Knot, Toggle (CT77106), Jewel, Available through Oriental Carpets. This Area Rug in the Warm and Colorful Sunset Home is located in the living room. It had a shaggy dog kind of look to it, the colors blended extremely well within the house as a whole. The rug itself made the room inviting and very comfortable at the same time. It just made you want to take your shoes off to feel it between your toes.■

Adriana Jasso

Interior Environments

The materials chosen for the hallway bring the smooth and rough textures together in a complimenting manner. They play off of each other. The *Mirage* maple wood floor and the ocean green slate (Alpha Granite and Marble, Inc.), are able to hold over the passage of time and repetitive use.■

Comparison Shopping

Measuring one Staircase against another....

Taryn Dioino

Interior Environments

The staircase in the second Sunset home was great. It fit in with the whole geometric feel of the home by using frosted glass squares against a dark stained wood. The dark wood contrasted beautifully with the light wooden trim. The staircase at the ASID home was too steep and very old fashioned. It had light wooden railings with white spindles.■

Dawn Wright

Interior Environments

The staircase in the ASID home was trimmed in darker wood than the Sunset home. The stairs were also harder to climb. I liked the stairs in the Sunset home because they were more practical and seemed to have a feel of home rather than the feeling of a hotel.■

Kim Payne

Period & Contemporary Furniture

The sunset house (cool & contemporary) has an "L" shape to the staircase, made out of Iron & Ultraglas, while the run is made out of coconut flooring. The walls look like they are dry-brushed with two shades of yellow, it also gives it a textured look. There is a place for storage for magazines, keys, mail, and all the other little things that you would bring in the door. Entry is open fully to the second floor with a large chandelier hanging about half way down. The floor is limestone & marble with inlaid border of glass & slate.■

Return Address

Street Number and Name

City, State 98765-4321

BULK RATE

US POSTAGE

PAID

PERMIT No. 00000

ADDRESS CORRECTION REQUESTED

Mailing Address

Street Number and Name

City, State 98765-4321